



TATA HOUSING

A decorative flourish with intricate scrollwork and swirls, framing the text 'La Vista' in a dark, horizontal banner.

La Vista

RESIDENTIAL DEVELOPMENT SCHEME
AT MALÉ, MALDIVES.

TATA HOUSING

TATA HOUSING, ONE OF INDIA'S LEADING REAL ESTATE DEVELOPERS, IS A CLOSELY HELD PUBLIC LIMITED COMPANY AND A SUBSIDIARY OF TATA SONS. IT IS THE FIRST CORPORATE TO PIONEER THE CONCEPT OF REAL ESTATE DEVELOPMENT IN INDIA. IT IS WIDELY RECOGNIZED FOR QUALITY CONSTRUCTION, ETHICAL AND TRANSPARENT BUSINESS PRACTICES, HIGH STANDARDS OF MAINTENANCE AND TIMELY DELIVERY OF PROPERTIES. TATA HOUSING HAS SUCCESSFULLY DEMONSTRATED CAPABILITIES IN CONSTRUCTION, ENGINEERING, COMMERCIAL/ IT PARKS, HOUSING AND TOWNSHIP DEVELOPMENT. IT IS KNOWN FOR INTERNATIONAL STANDARDS OF DESIGN AND GREEN SUSTAINABLE DEVELOPMENTS.

SG18

SG18 WAS FOUNDED WITH A VISION OF PROVIDING END-TO-END SOLUTIONS TO COMPANIES AND GOVERNMENT INSTITUTIONS. SG18 AIMS TO PROVIDE HIGH QUALITY CRAFTSMANSHIP IN THE REAL ESTATE AND CONSTRUCTION INDUSTRY. ITS MAIN OBJECTIVE IS TO JOIN HANDS WITH GOVERNMENT AND LOCAL PARTNERS IN SAARC COUNTRIES AND EXPLORING DEVELOPMENT OPPORTUNITIES.



LA VISTA

ENVISAGED BY THE GOVERNMENT OF MALDIVES, LA VISTA WILL BE DEVELOPED BY TATA HOUSING DEVELOPMENT COMPANY LTD. AND SG18 REALTY PVT. LTD. DESIGNED BY REPUTED INTERNATIONAL ARCHITECTS F+A OF THE US, LA VISTA'S ARCHITECTURE WILL CHARACTERIZE MODERNIST PRINCIPLES WITH A CONTEMPORARY LOOK. LOCATED ON BLOCK 135, GAKOSHI AND BLOCK 162, ARABIA, LA VISTA WILL NOT ONLY HAVE NATURAL LIGHT AND VENTILATION FOR ALL ITS RESIDENTS BUT ALSO OFFER AN EXCLUSIVE ESCAPE TO A UNIQUE LANDSCAPED DECK ABOVE THE RETAIL PODIUM.

LOCATION MAP OF BLOCK 135, GAKOSHI AN

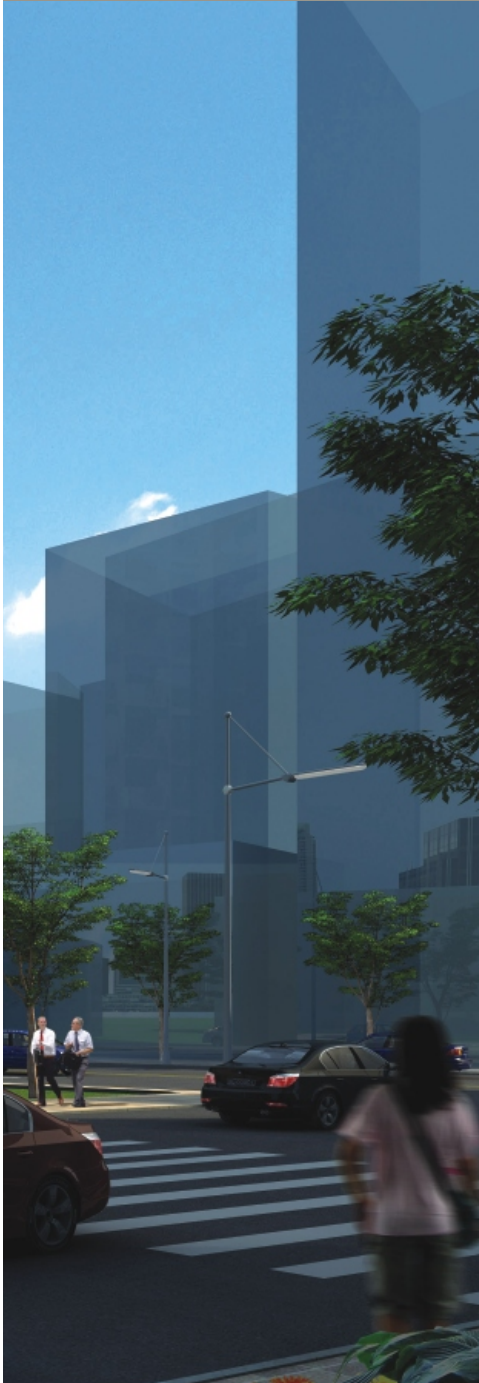


ND BLOCK 162, ARABIA



BLOCK 162, ARABIA





THIS UNIQUE BLOCK IS DESIGNED AROUND A LARGE CENTRAL RETAIL COURTYARD WHICH GIVES ITS RESIDENTS AN IDEAL ESCAPE FROM THE BUSY URBAN STREETS. RESIDENTS CAN ENJOY THE TRANQUIL ATMOSPHERE AS WELL AS HAVE THE BENEFIT OF CONVENIENCE SHOPPING.

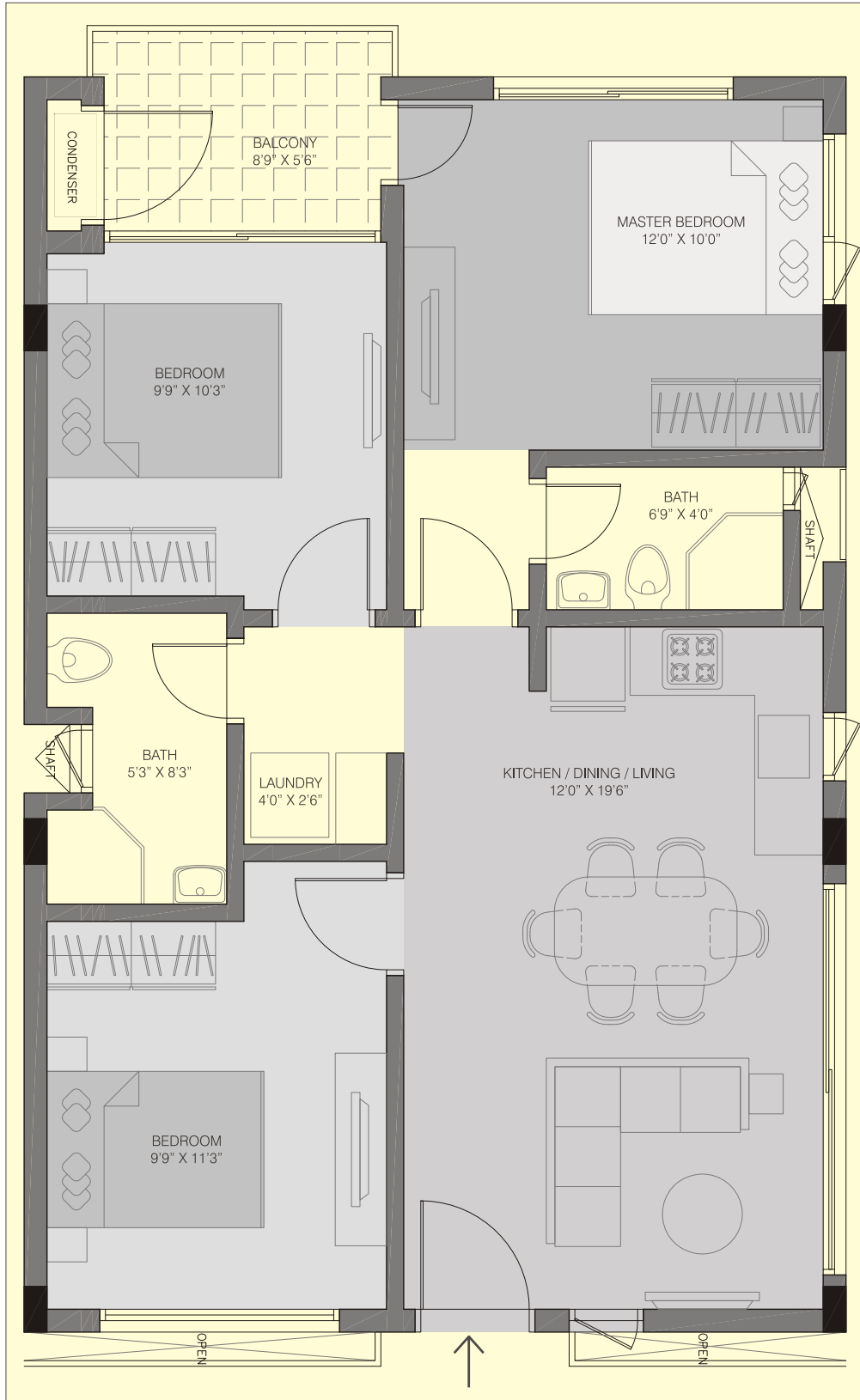
MASTER PLAN - BLOCK 162





UNIT PLAN

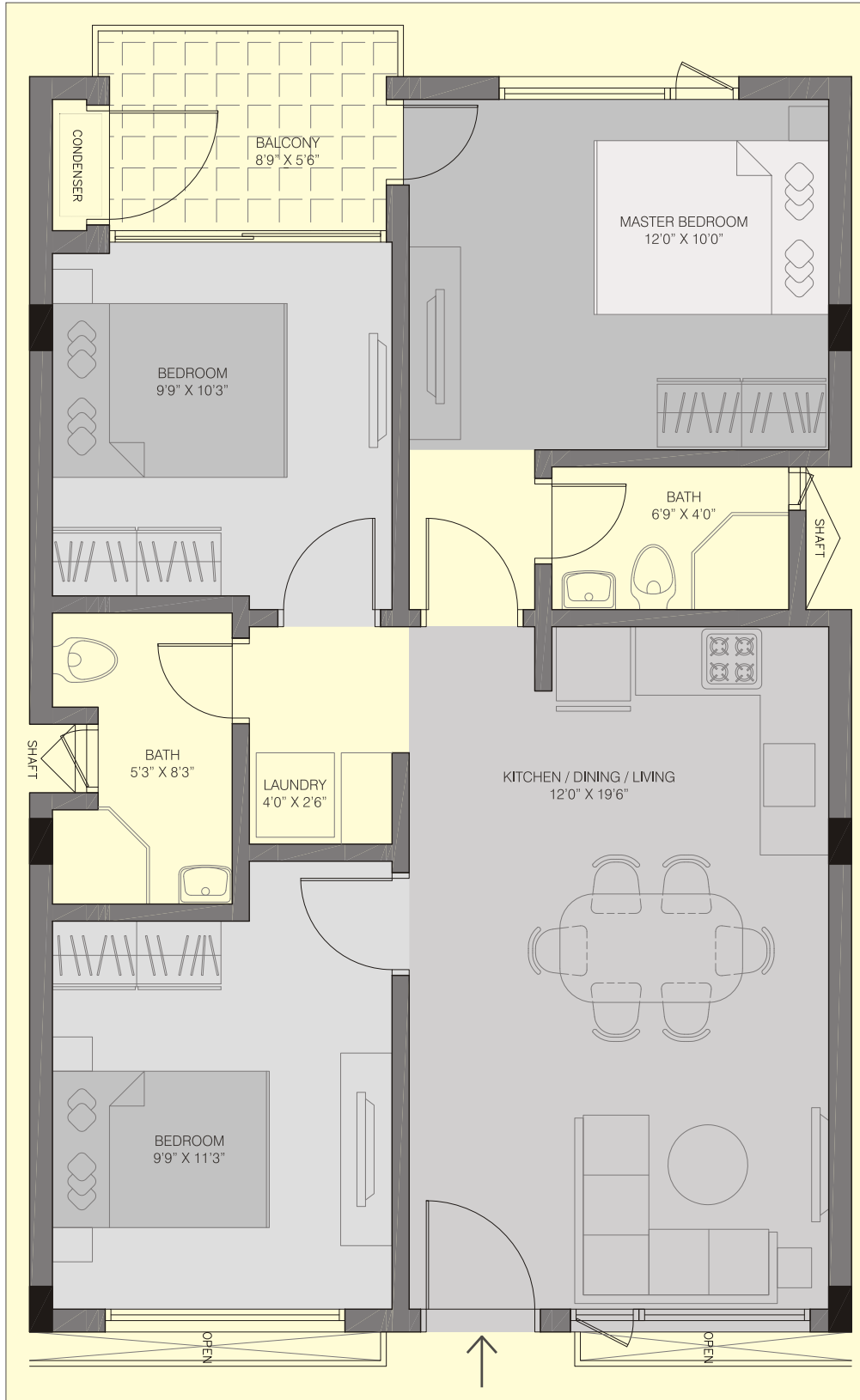
CORNER UNIT PLAN



BUILT-UP AREA 1000 SQ. FT.

UNIT PLAN

TYPICAL UNIT PLAN



BUILT-UP AREA 1000 SQ. FT.

AMENITIES

- LANDSCAPED DECK FOR THE RESIDENTS

SPECIFICATIONS

- LIVING AND DINING

EMULSION PAINT FINISH ON WALLS AND CEILING

CERAMIC TILES FOR FLOORING

- BEDROOM

EMULSION PAINT FINISH ON WALLS AND CEILING

CERAMIC TILE OR EQUIVALENT FOR FLOORING

FAN AND SOCKET OUTLETS





- KITCHEN

EMULSION PAINT FINISH ON WALLS AND CEILING

CERAMIC TILE FOR FLOORING

KITCHEN PLATFORM WITH SINK AND APPROPRIATE FIXTURES

- BATHROOM

CERAMIC WALL TILING FROM FLOOR FINISH LEVEL UP TO 1.8 MTS HEIGHT AND REST WITH EMULSION OR EQUIVALENT ON WALLS AND CEILING

CERAMIC TILE FOR FLOORING

BATHROOM FITTINGS AND SANITARY WARE

WASHING MACHINE SPACE WITH 1.8MTS HEIGHT OF CERAMIC TILE ON THE WALL AND REST OF THE WALL AND CEILING TO HAVE EMULSION PAINT, WITH 15AMP SOCKET AND DRAIN POINT

TOILET AND WASHING SPACE TO HAVE SUSPENDED CEILING



APEX REALTY PRIVATE LTD.

REGISTERED OFFICE: H. SHEEREN VILLA, SUREVI MAGU, K. MALÉ, MALDIVES.

"Any content mentioned in the brochure is for information purpose only and does not constitute any offer or guarantee whatsoever. Apex Realty Private Limited retains the right to amend, change or alter all the floor plans, amenities, rendered images, area and dimensions designs and specifications at any given time. All images are for representation purpose only."